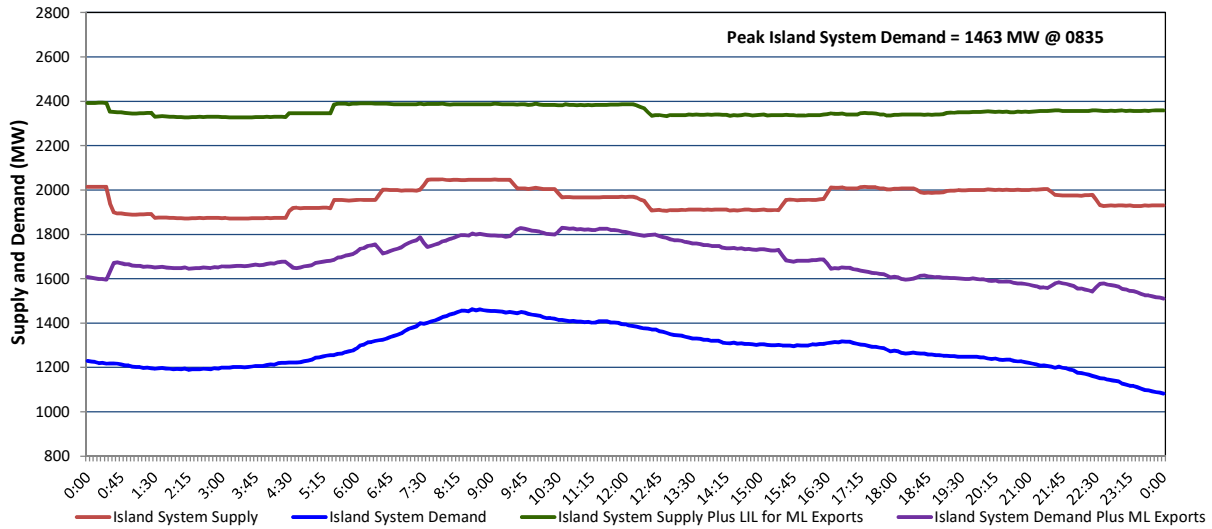


Newfoundland Labrador Hydro (NLH) Supply and Demand Status Report Filed Friday, December 27, 2024

Section 1 Island Interconnected System - Supply, Demand & Exports Actual 24 Hour System Performance For Wednesday, December 25, 2024



Island Supply Notes For December 25, 2024 ¹

A As of 0000 hours, October 20, 2024, Holyrood Unit 1 unavailable due to forced extension to planned outage (170 MW).

Section 2 Island Interconnected System - Supply, Demand & Outlook

Thu, Dec 26, 2024	Island System Outlook ²	Seven-Day Forecast	Island System Daily Peak Demand (MW)	
			Forecast ⁸	Adjusted ⁶
Island System Supply: ⁴	1,953 MW	Thursday, December 26, 2024	1,295	1,215
NLH Island Generation: ^{3,7}	1,525 MW	Friday, December 27, 2024	1,190	1,110
NLH Island Power Purchases: ⁵	135 MW	Saturday, December 28, 2024	1,230	1,150
NP and CBPP Owned Generation:	210 MW	Sunday, December 29, 2024	1,240	1,160
LIL/ML Net Imports to Island: ⁹	83 MW	Monday, December 30, 2024	1,210	1,130
		Tuesday, December 31, 2024	1,205	1,125
7-Day Island Peak Demand Forecast:	1,295 MW	Wednesday, January 1, 2025	1,145	1,052

Island Supply Notes For December 26, 2024

- Notes:
1. Generation outages for running and corrective maintenance are included. These are not unusual for power system operations. They generally do not impact customer supply. Hydro schedules outages to system equipment whenever possible to coincide with periods when customer demands are low and sufficient supply reserves are available. However, from time to time equipment outages are necessary and reserves may be impacted.
 2. As of 0800 Hours.
 3. Gross continuous unit output.
 4. Gross output from all Island sources (including Note 4).
 5. NLH Island Power Purchases include: ML Imports, Exploits Generation, Rattle Brook, Star Lake, Wind Generation and capacity assistance (when applicable).
 6. Adjusted for interruptible load and the impact of voltage reduction when applicable.
 7. Due to limitations inherent in the design of combustion turbines, the output of combustion turbines may be reduced in the event that ambient temperatures exceed the threshold required for full rated output. This threshold is dependent on the design of each turbine.
 8. Does not include ML Exports.
 9. LIL Import sunk in the Island System. Actual LIL flows will be restricted by various system conditions including, but not limited to, Island Load, ML Exports and Avalon Unit status.

Section 3 Island Peak Demand and Exports Information Previous Day Actual Peak and Current Day Forecast Peak

Wed, Dec 25, 2024	Island Peak Demand ¹⁰	8:35	1,463 MW
	Exports at Peak		341 MW
	LIL Net Imports to Island		3,587 MWh
Thu, Dec 26, 2024	Forecast Island Peak Demand		1,295 MW

Notes: 10. Island Demand is supplied by NLH generation and purchases, LIL Imports plus generation owned and operated by Newfoundland Power and Corner Brook Pulp & Paper (Deer Lake Power, DLP).